

Portable stand-alone instruments from 40 to 100 MHz

**OX 7042****OX 7062****OX 7102****OX 7104**

- **5 complementary tools in a single instrument: OSCILLOSCOPE, MULTIMETER, FFT ANALYSER, HARMONIC ANALYSER and RECORDER**
- **Sampling rate 1 GS/s in one-shot mode and 50 GS/s in ETS mode**
- **2 or 4 isolated measurement channels (600 V CAT III) and up to 8 curves on screen**
- **Standard "real-time" FFT analysis and calculation functions on channels**
- **2 or 4 independent TRMS digital multimeters (8,000 counts, 200 kHz)**
- **Colour or monochrome LCD touch screen**
- **33 direct control keys and "Windows-like" menu on screen**
- **Probix "plug&play" input terminals and smart sensors**
- **Multi-interface communication connectors: RS232, Centronics and Ethernet**
- **- new - Memory depth of up to 50,000 points (OSCILLOSCOPE and RECORDER modes)**
- **- new - Triggering on measurement thresholds in OSCILLOSCOPE and MULTIMETER modes**
- **- new - Simplified installation of the software options by means of unique coding**
- **- new - Web Server (ftp server / client) with cursors and automatic measurements**

A UNIQUE INSTRUMENT



From the point of view of innovation, Metrix has not just contented itself with launching the first portable, stand-alone oscilloscope with four 600 V / Cat. III isolated channels on the market. Indeed, everything about the OX 7000 models, including their ergonomics, versatility, safety and various communication features, has been designed to offer the best possible trade-off between safety, service and comfortable use. In performance terms, they are at the top of their category with their 12 bit / 1 GS/s converter, a sampling rate of 50 GS/s on periodic signals and capture of transients lasting 2 ns or more. Because modern means more efficient, these models can be controlled using either the "Windows-like" menus on the touch screen or 33 dedicated keys offering direct access to the most frequently-used functions. For even better performance in the field, the OX 7000 models offer a new patented system of "plug and play" accessories, individual insulation of each of the measurement channels, extension of the remote management possibilities linked to the Ethernet link with a WEB Server and a variety of built-in instruments, including a 200 kHz multi-channel multimeter.

Direct access and intuitive navigation

The "Windows-like" ergonomics facilitate user familiarization with the oscilloscope - usually considered difficult. The touch screen makes navigation smooth and easy. The various menus can be opened using the stylus which can also be used to modify the graphical elements such as the cursors, triggers, etc.

*With their 2 or 4
isolated channels
(600 V Cat. III), their*

*advanced trigger functions, integrated FFT, mathematical
calculations on the curves and WEB server, the 100 MHz OX 7102
and OX 7104 will be particularly appreciated in **ELECTRONIC
MAINTENANCE***

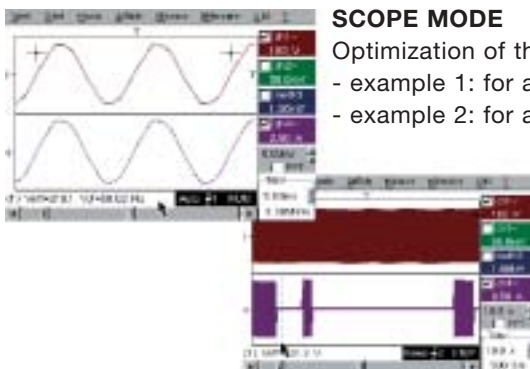


*The OX 7042's extra-large monochrome or colour screen, 40 MHz bandwidth, 2
isolated 600 V Cat. III channels and harmonic analyser module will make it
particularly interesting for **INDUSTRIAL MAINTENANCE** professionals.*

50,000-POINT MEMORY

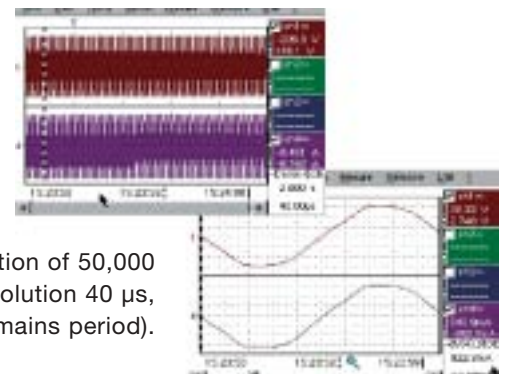
Availability of the memory:

- in one-shot mode for time bases from 10 ms to 200 s/div
- in ETS mode for all time bases



SCOPE MODE

Optimization of the duration/resolution trade-off
- example 1: for a 1 μ s resolution, 50 ms duration.
- example 2: for a 100 s duration, 2 ms resolution.



RECORDER MODE: Acquisition of 50,000
samples, maximum resolution 40 μ s,
x100 zoom (one mains period).

**OX 7000 oscilloscopes,
Simplicity serving performance**

USER-FRIENDLY PERFORMANCE



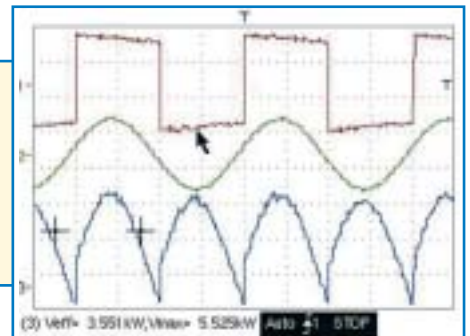
The oscilloscope, multimeter, harmonic analyser and recorder modes are directly accessible on the instrument's front panel.



There are 33 keys for direct access to the instrument's various parameters and modes. Contextual online help concerning the keys on the instrument (in five languages) is available on screen.



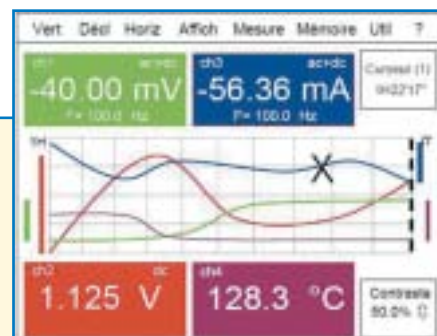
The extra-large display area for traces (110 x 75 mm) in "FULL SCREEN" mode ensures that screenshots are not cluttered by superfluous information or menus.



Contextual display area

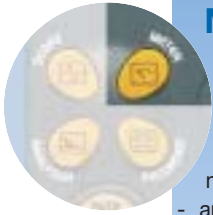
(oscilloscope mode) With the touch screen, the menus in five languages give access to all the functions without exception. The stylus can be used to modify the different graphical elements. The contextual display area clearly indicates the current setting.

In multimeter mode, the values measured are recorded automatically on all the active channels to allow monitoring over periods ranging from 5 minutes to 24 hours.



SEVERAL INSTRUMENTS IN ONE FOR COMPREHENSIVE, ACCURATE DIAGNOSTICS

A 200 kHz MULTI-CHANNEL TRMS DIGITAL MULTIMETER



Just like for the 4 "instrument" modes, you can access the multimeter simply by pressing the corresponding key. The OX 7000 models are genuine 2 or 4-channel TRMS digital multimeters offering the following measurements:

- amplitude (DC or AC voltage and current, power, thermocouples, etc.)
- resistance, continuity, capacitance
- component test, etc.

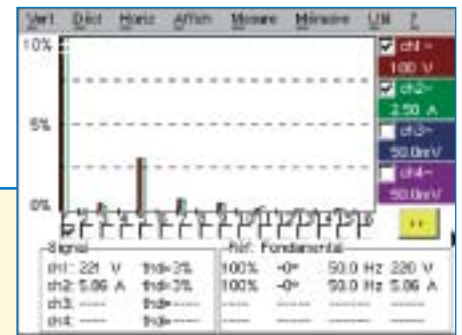
Temperature can be measured with the Pt 100 and Pt 1000 sensors. By using 1 or 2 thresholds per channel to monitor the measurements, you can capture faults as short as 48 ms, and you can set the fault duration, beginning at 48 ms. The instrument also allows you to record a list of time/date-stamped faults (up to 100).



Specifications	2 or 4-channel multimeter – 8,000 counts - TRMS
AC, DC and AC + DC voltages	300.0 mV to 600.0 VRMS or 400 mV to 800.0 VDC - accuracy VDC 0.5% R + 5 D – bandwidth 200 kHz
General specifications	2 or 4 channels – 8,000 counts max. & bargraph - Min/Max - TRMS – Time/date-stamped graphic recording
Resistance	80.00 Ω to 32.00 MΩ - accuracy 0.5% R + 25 D - 10 ms quick continuity test
Other measurements	Capacitance from 5.000 nF to 5.00 mF / Frequency 200.0 kHz - 3.3 V diode test

A HARMONIC ANALYSER (option)

Harmonic analysis is carried out up to the 61st order to comply with the requirements of the EN 50160 standard (THD on 50 orders minimum). It is possible to preselect the frequency of the fundamental for the standards (50 Hz, 60 Hz and 400 Hz). This function helps to improve analysis performance and allows measurement when the level of a harmonic order is greater than the fundamental. It is possible to view the harmonic analyses of two or four channels simultaneously.



The "vertical zoom" (button on front panel) can be used to adjust the dynamic range to the requirements (0-100%, 0-50%, 0-25%, or 0-10%).

Harmonic ANALYSER (option)	
Multi-channel analysis	2 or 4 depending on model - 61 orders – frequency of fundamental from 40 to 450 Hz in auto or manual mode
Processing	Permanent display: total RMS value & THD – selected order: %F, phase, freq, VRMS

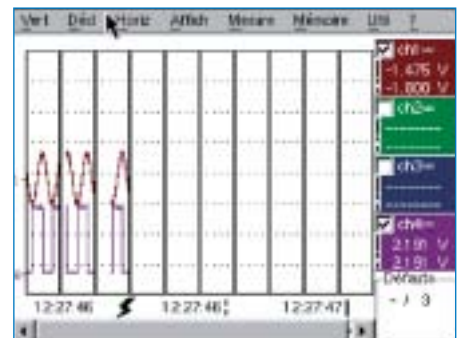
A RECORDER (option)



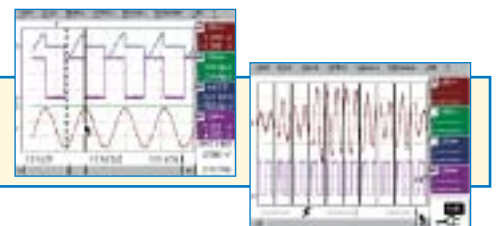
To monitor the variations of physical or mechanical phenomena over time, a genuine high-speed digital recorder can be incorporated into the instrument as a software module. This allows acquisition rates of up to 40 1/s between 2 measurements and the recordings can cover a whole month.

Automatic fault capture is possible by monitoring 1 or 2 thresholds per channel.

The fault duration can be set from 160 μs to approximately 8 days. It is also possible to carry out this monitoring on tolerance windows. The capture function triggers storage of the phenomenon observed in long-term memory (up to 50 kpoints) or automatic capture of successive time/date-stamped faults (max. 500 faults). The "faults" are automatically stored either in the internal memory or on an FTP server (PC hard disk). The analysis can be carried out on the instrument, using the cursors and automatic measurements. It is also possible to perform mathematical calculations between the channels or to export standard "TXT" files into a spreadsheet.



Display in normal mode and in fault capture mode



RECORDER (option)	
Acquisition rate	Sampling interval of 800 1/s to 17 min 51 s – (standard memory 2,500 points) Sampling interval of 40 1/s to 53.5 s - (with HX0077 memory extension)
Recording duration	2 s to 31 days 16 hrs 20 min
Acquisition mode	Conditioned by thresholds or windows – "Normal" acquisition or up to 500 faults
Processing	Time/date-stamped graphic recording, conversion and units of physical quantities, measurements using cursors and event searches, file format compatible with standard spreadsheet (".TXT")

SOPHISTICATED AND OFTEN UNPRECEDENTED FUNCTIONS

An OSCILLOSCOPE with complex trigger functions so that you only record what you need

limited to a primary edge or pulse-width trigger.

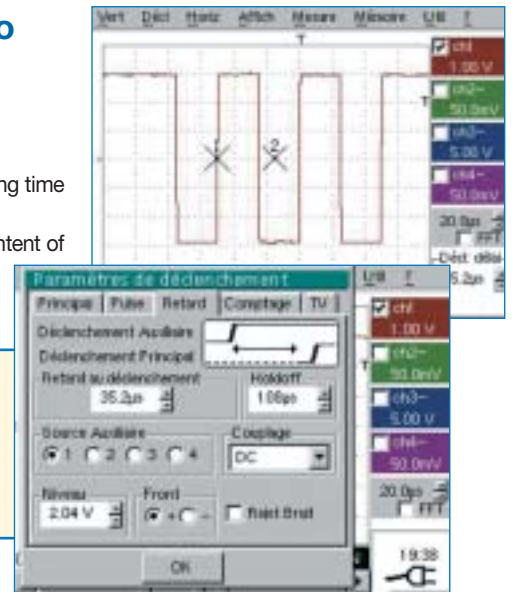
The delay mode allows users to observe any event with the maximum resolution, even if it occurs a long time after the effective trigger.

The counting mode makes it possible to count events prior to triggering so that you can check the content of digital frames, for example. The trigger can also be associated with a signal.

New & unique on the market!

For the "Oscilloscope" and "Multimeter" modes, fault capture is possible after parameterizing a "Software" trigger based on monitoring the tolerance interval. It is also possible to store and automatically restart threshold overrun captures.

Effective triggering on the channel will occur after a delay of 35.2 μs in relation to the auxiliary source.

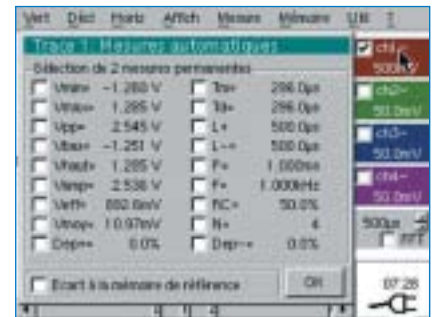


Comprehensive automatic measurements for precise analysis

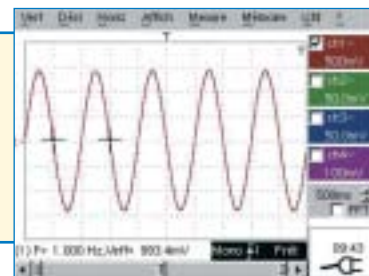
With a single click, the automatic measurements window displays all the 19 parameters of a signal. For unambiguous analysis, two markers indicate the portion of the signal where the first automatic measurement was made.

A specific measurement area can then be selected by framing it with the manual cursors to ensure reliable, more accurate results.

Direct comparison of two traces is possible by ticking the "reference memory difference" box, so that the signal's 19 parameters are displayed as deviations.



If mathematical functions, scaling values or physical units are defined, these measurements will take them into account so as to avoid interpretation errors due to direct readings. In this way, an almost infinite number of measurements (current, power, etc.) are available with 4-digit resolution thanks to the 12-bit converter developed by Metrix.

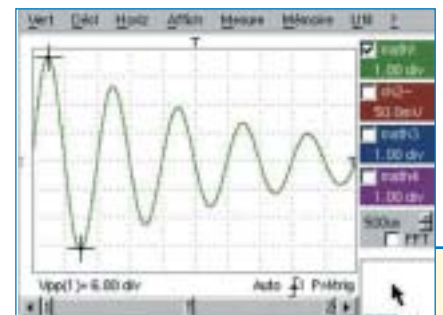


The MATH functions

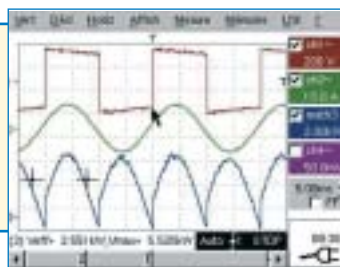
In oscilloscope mode, the math functions (1, 2, 3 and 4) can be used to define a mathematical functions for each of the traces, as well as vertical scaling with definition of the actual physical unit.

The screen of the mathematical editor is capable of displaying 4 calculated traces on which all the automatic or cursor measurements remain available. This means that it is possible to examine the waveforms such as the power (U x I), for example, and carry out all the associated measurements.

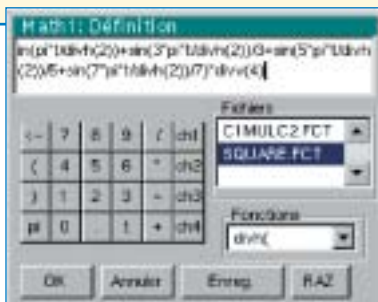
A large number of operators are available, such as +, -, x and /, but these oscilloscopes also offer sine, cosine, exponential, logarithm, square root, etc., allowing users to develop specific applications.



When two channels are multiplied, it is possible to view the result after scaling, with its physical unit (W for example) and the original curves (in this example, the current and the voltage).



Many complex functions are editable, including simulation of a trace on the basis of its mathematical equation and therefore modelling of an expected result. There is almost infinite capacity for saving the functions created so that they can be recalled subsequently.



The "MATH" functions can be input very easily using the simplified menu in "Standard" mode or the equation generator in "Advanced" mode.

SOPHISTICATED AND OFTEN UNPRECEDENTED FUNCTIONS

Real-time Fast Fourier Transform (FFT) for signal frequency analysis

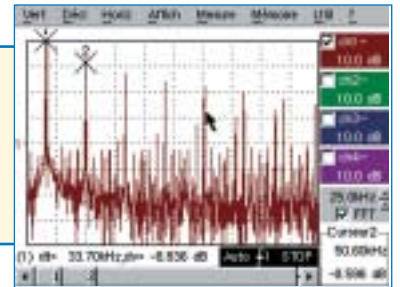
FFT is used to calculate the discrete representation of a signal in the frequency domain from its representation in the time domain, on the basis of 2,500 points. It is often crucial for effective diagnosis when carrying out qualitative signal analysis:

- Measurement of the different harmonics and signal distortion,
- analysis of a pulse response,
- search for noise source in logical circuits,
- etc.

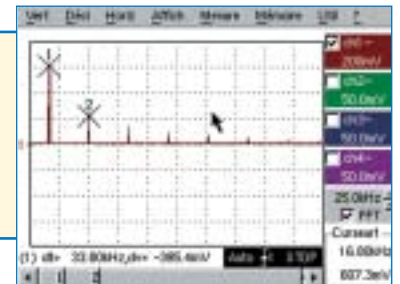
Several weighting windows are available, as well as 2 display modes: linear or logarithmic (scale in dB). The 2 cursors can then be used to make accurate measurements of the frequency lines, levels and attenuations, taking advantage of the 80 dB dynamic range provided by the 12 bit / 1 GS/s conversion.

The autoset function helps to obtain optimum spectrum display so that a graphic zoom can then be applied in order to analyse all the details of the spectrum.

FFT with a Hanning window and a logarithmic scale.



FFT with a rectangular window and a linear scale.



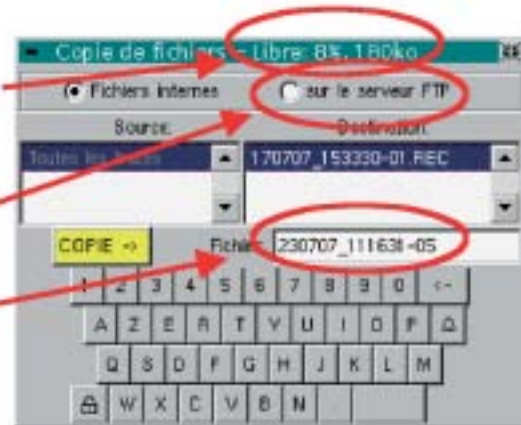
File management

Each of the traces can be displayed instantly as a reference by pressing a single key for immediate comparison and deviation measurements. Back-ups are possible in two formats: .TRC for recall to the screen or .TXT for direct export into another standard Windows application, such as a spreadsheet.

Management of remaining storage capacity (% and size in kB)

Storage possible on FTP server (PC hard disk)

Plain-language default name with format "date/time/number"



ProbiX SYSTEM SMART PROBES AND ADAPTERS

The **ProbiX** system guarantees quick, error-free implementation of the instrument, a crucial advantage with equipment used for troubleshooting. For flawless compatibility, it is always possible to connect BNC accessories and standard banana leads via the safety adapters supplied.

Interchangeable plastic rings can be used to match the accessory's colour to the channel's colour.

The oscilloscope directly powers and calibrates the sensors. Some accessories even include three buttons directly accessible on the probe.



Channel configuration and sensor management

The sensor coefficients, scales and units and the channel configuration are managed automatically..

The first two control buttons on the probes can be used to directly modify the parameter settings of the channel to which they are connected. They also control the functions accessible on the front panel of the oscilloscope.

The third button is specialized for each accessory. On the voltage probes, for example, it controls lighting of the measurement zone. At connection, all the preferred parameters stored in the accessories (assignment of buttons 1 and 2, colour) are automatically reactivated by means of the ProbiX "pop-up" shown opposite.

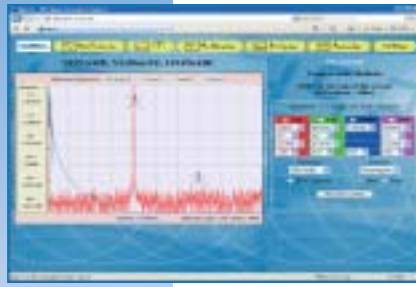
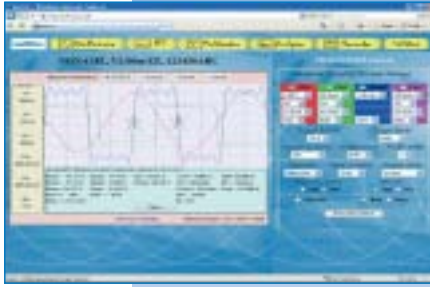


Accessory identification and safety management

A sort of "plug and play" system for measurement, **ProbiX** probes and adapters are immediately recognized when they are connected. The instrument not only identifies them, but also gathers information on their characteristics. Active safety is built in, notably in the form of safety information and recommendations concerning the accessory used.



NO MORE PROBLEMS WITH DISTANCE AND EQUIPMENT



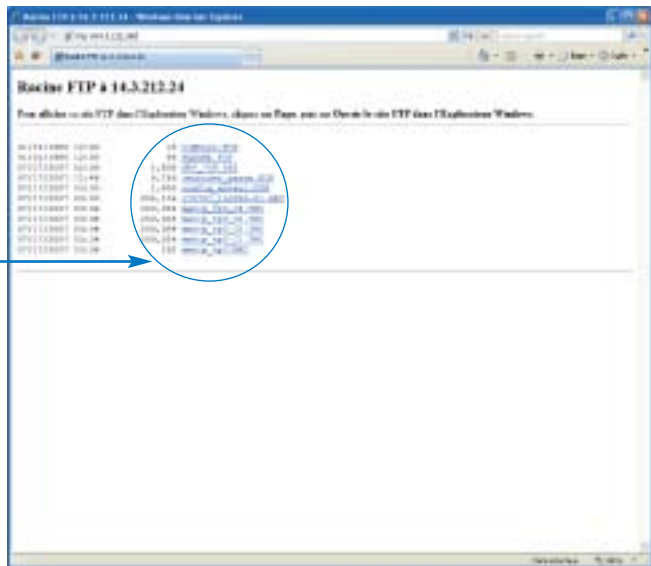
The ETHERNET interface and its WEB server opens the way for new ways of working and communicating, locally or remotely, as well as a level of comfort and efficiency which users quickly learn to rely on. To establish communication, all the other items of equipment (printer, PC, etc.) need to have IP addresses, like the OX 7000. In this way, even when you are on the road, you can print out your results on a network printer or exchange files between the OX and a computer. You can also communicate with the instrument remotely from any PC, view the traces in real time and control the instrument using the control panel.

Whether local or remote, these transfer and exchange operations can be carried out simply, quickly and without installing any software on the computer, thanks to the Web and FTP servers.. For the first time, these portable oscilloscopes for industrial and electronic maintenance help to solve the traditional problems linked to printing, back-up and documentation of the traces. The distance between the maintenance site and the office becomes virtual.

Use of the WEB server

File transfer

The files can be copied onto the PC using the standard Windows commands



The OX 7000 oscilloscopes are available in a special version with a high-quality metal carrying case to protect the instrument and store all the probes and measurement accessories.

It is really simple to configure communications

because, in most cases, the instrument's IP address is supplied automatically by the local server. All you have to do is enter the address of the printer to be used.



TECHNICAL SPECIFICATIONS	OX7042B	OX7062B	OX7102B	OX7104B
MAN-MACHINE INTERFACE				
Type of display	5.7" colour or B&W LCD screen (depending on model) (115 x 86 mm) - 320 x 240 - CCFL backlighting (adjustable standby time)			
Screen commands	Touch screen - "Windows-like" menus and graphic commands			
Choice of language	Menus and online help in 5 languages (French, English, German, Spanish, Italian)			
OSCILLOSCOPE MODE				
VERTICAL DEFLECTION				
Bandwidth	40 MHz	60 MHz 15 MHz, 1.5 MHz or 5 kHz bandwidth limiter	100 MHz	100MHz
Number of channels	2 isolated channels	2 isolated channels	2 isolated channels	4 isolated channels
Vertical sensitivity	16 calibres from 2.5 mV - 200 V/div and up to 156 IV/div in vertical zoom mode (12-bit converter) - Accuracy $\pm 1\%$			
Vertical zoom	"One Click Winzoom" system (12-bit converter and direct graphical zoom on screen) - x16 max.			
HORIZONTAL DEFLECTION				
Sweep speed	35 calibres from 1 ns/div to 200 s/div., accuracy $\pm 0.1\%$ - Roll mode from 100 ms to 200 s/div			
TRIGGERING				
Mode	On all channels: automatic, triggered, one-shot, auto level 50%			
Type	Edge, pulse width (20 ns - 20 s), delay (120 ns to 20 s), counting (3 to 16,384 events), TV frame or no. of lines (525 = NTSC or 625 = PAL/SECAM) - Continuous adjustment of Trigger position			
EDIGITAL MEMORY				
Maximum sampling rate	50 GS/s in ETS mode - 1 GS/s in one-shot mode (on each channel) - 12 bits (vertical resolution 0.025%)			
Memory depth	2,500 points/channel and up to 50,000 points/channel with the "Extended Acquisition Memory" option			
Display modes	2 ns Glitch Mode, Envelope Mode, Averaging (Factors 2 to 64), XY Mode			
OTHER FUNCTIONS				
AUTOSET	Complete Autoset in less than 5 s, with recognition of the channels - Frequency > 30 Hz			
FFT analyser & MATH functions	FFT (Lin or Log) with measurement cursors - Functions: +, -, x, / and mathematical function editor			
Cursors	2 or 3 cursors: simultaneous V and T or Phase - Resolution 12 bits, display 4 digits			
Automatic measurements	19 time or level measurements, Phase measurement - Resolution 12 bits, display 4 digits			
MULTIMETER MODE				
General characteristics	2 or 4 channels - 8,000 counts max. + min/max bargraph - TRMS - Time/date-stamped graphic recording (5 min to 31 days)			
AC, DC and AC + DC voltages	300 mV to 600 VRMS, 400 mV to 800 VDC - VDC accuracy 0.5 %R+5D - bandwidth 200 kHz			
Trigger on measurement window	2 or 4 monitored channels, parameterizable fault duration - Up to 100 time/date-stamped faults stored in a ".TXT" file			
HARMONIC ANALYSER MODE (option)				
Multi-channel analysis	2 or 4 (depending on model), 61 orders, fundamental frequency from 40 to 450 Hz in auto or manual mode			
RECORDER MODE (option)				
Sampling duration	2 s to 1 month / 800 ls to 18 min (40 ls to 53 s with the "Extended Memory Acquisition" option)			
Recording conditions	On thresholds or window, simultaneous conditions on several channels, with parameterizable duration starting at 160 ls			
General specifications				
Configuration memories	Unlimited - size of a ".CFG" file: approx. 1kB			
Printing	Network printer via 10 Mb Ethernet (standard), RS232 (standard) or Centronics (option)			
PC communication	10 Mb local Ethernet, RS 232 (max. 115 kbps) or USB (option) - "Sx-Metro" PC application software (option)			
Network	10 Mb remote Ethernet, Web server (remote control, "real-time" trace, cursors and automatic measurements) FTP server (file exchange with a PC), FTP client (storage on PC hard disk - unlimited) Mains power supply NiMH battery - Battery life up to 4 hrs - Adjustable standby function - Multi-voltage adapter/high-speed charger (standard) - 98-264 V / 47-63 Hz / (15 W)			
Safety / EMC	Safety as per IEC 61010-1 (2001) - EMC as per EN61326-1 - 600 V CAT III			
Mechanical specifications	265 x 195 x 56 mm - 1.9 kg with batteries - Protection IP51 (IP41 for OX7104)			

TO ORDER

REF. FOR ORDERING	STATE AT DELIVERY
OX7042B-M OX7042B-C OX7062B-M OX7062B-C OX7102B-C	1 instrument, 1 operating and programming manual on CD-ROM, 1 external power supply (battery charger), 9.6 V NiMH battery, 1 1/10 Probox HX0030(A) probe (x2 for OX7014), 1 Probox HX0031 BNC adapter (x2 for OX7104), 1 Probox HX0033 banana adapter, 1 set of banana leads, 1 HX0040 crossed-Ethernet cable and 1 HX0042 RS232 serial cable
OX7042B-MK OX7042B-CK OX7102B-CK OX7104B-CK	1 instrument, 1 operating and programming manual on CD-ROM, 1 external power supply (battery charger), 9.6 V NiMH battery, 1 1/10 Probox HX0030(A) probe (x2 for OX7014), 1 Probox HX0031 BNC adapter (x2 for OX7104), 1 Probox HX0033 banana adapter, 1 set of banana leads, 1 HX0040 crossed-Ethernet cable and 1 HX0042 RS232 serial cable, SX-METRO/P processing software and 1 carrying case

OPTIONAL ACCESSORIES

Software options

- HX0028: "Harmonic analysis" options
- HX0029: "Recorder" option
- HX0077: "Acquisition memory extension" option

Probox accessories

- HX0030(A): Probox 1/10 probe - 250 MHz - 600 V CAT III
- HX0031: Probox BNC adapter - BW 250 MHz - 600 V CAT III
- HX0032: Probox 500hm BNC adapter - BW 250MHz - 600 V CAT III
- HX0033: Probox banana adapter - 600 V CAT III

- HX0034: Clamp-on ammeter - 20 mV/A, 80 A peak, AC/DC, BW 1 MHz, 600 V CAT III
- HX0035: Adapter for K thermocouple, 2 mV/C⁻¹, -40°C to +1,250°C
- HX0036: Adapter for Pt100, 2 mV/°C, -100 °C to +500 °C
- HX0071: Industrial accessories kit for HX0030

Metrological communication

- HX0039: Straight RJ45 Ethernet cable
- HX0040: Crossed RJ45 Ethernet cable
- HX0041: RS232 / Centronics adapter
- HX0042: 9-pin RS232 / SUBD cable

- HX0056: USB master / RS232 adapter
- HX0078: Verification and adjustment software
- P01101815: DB9M / DB25M adapter
- SX-METRO/P: Data processing software

Transport / Power supply

- HX0038: Carrying case
- HX0057: Fully-equipped Scopix case
- HX0061: 10 to 60 VDC vehicle power supply
- HX0063: Battery and external charger accessory



FRANCE
Chauvin Arnoux
190, rue Championnet
75876 PARIS Cedex 18
Tel: +33 1 44 85 44 85
Fax: +33 1 46 27 73 89
info@chauvin-arnoux.fr
www.chauvin-arnoux.fr

UNITED KINGDOM
Chauvin Arnoux Ltd
Waldeck House - Waldeck Road
MAIDENHEAD SL6 8BR
Tel: +44 1628 788 888
Fax: +44 1628 628 099
info@chauvin-arnoux.co.uk
www.chauvin-arnoux.co.uk

MIDDLE EAST
Chauvin Arnoux Middle East
P.O. BOX 60-154
1241 2020 JAL EL DIB (Beyrouth)
Tel: +961 1 890 425
Fax: +961 1 890 424
camie@chauvin-arnoux.com
www.chauvin-arnoux.com

For assistance and ordering

